



The Aria FAST 60C system is a complete, automated Pall membrane filtration system in a 12.2 m (40 ft) high cube container.

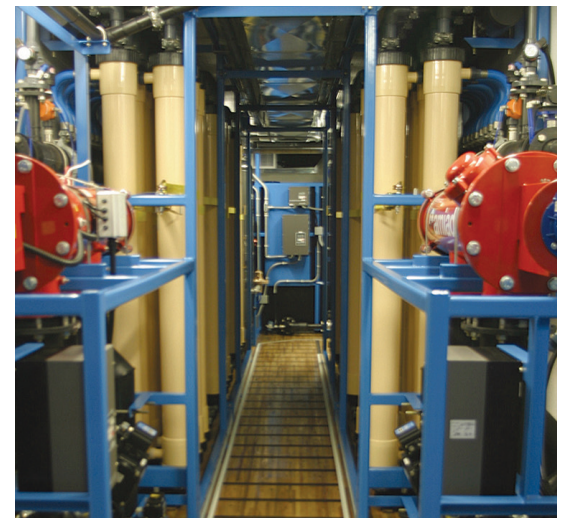


When facing source water problems, municipal and industrial customers require a cost-effective solution to supplement their supply. Whether caused by emergencies, equipment failures, seasonal demand, planned system upgrades or system replacements, Pall Water has the solution. Pall mobile water treatment systems are designed to supplement or replace your system on a permanent or temporary basis.



The **Aria FAST 60C** system is a complete, automated Pall membrane filtration system in a 12.2 m (40 ft) high cube container. With appropriate site preparation and minimal labor, the system can be operational within hours. It's as simple as that.

Using the same state-of-the-art hollow fiber membranes as hundreds of installed Aria systems worldwide, the Aria FAST mobile solution transforms ground water, surface water, and secondary effluent into water that is free from harmful bacteria, cysts, and particles. The 60C is a compact system designed for up to 280 m³/hr (1,200 gpm) for both drinking water and industrial use water. Iron, manganese, and arsenic components can be effectively removed when oxidized to their particulate form.



The system is designed to operate in tandem with other water treatment technologies, such as Pall's IMPRO reverse osmosis systems.

CONTAINER DETAILS

Type	Container
Length 12.2 m	(40' Hi Cube)
Height	2.9 m (9-7')
Width	2.4 m (8')
Shipping Weight	7,700 kg (17,000 lb)
Operating Weight	14,000 kg (31,000 lb)

CONTAINER CONNECTIONS

Type	Grooved (flanged – optional)
Material	HDPE w/ 304SST frames
Raw Water Inlet	8 in (200 mm)
Membrane Filtrate Outlet	8 in (200 mm)
CIP/Backwash Waste Outlet	8 in (200 mm)
Misc Gravity Waste Outlet	4 in (100 mm)

TYPICAL FILTRATE QUALITY

Turbidity	< 0.1 NTU maximum, < 0.02 NTU typical
SDI	< 3 maximum, < 2.5 typical

Microorganisms like *Cryptosporidia* and *Gardia* cysts are removed with more than 6 log RR or 99.9999%, while particles are removed typically to non-detectable limits.

SYSTEM

Membrane	Membrane filtration
Max Capacity	280 m ³ /h (1200 gpm)
Filtration Outlet Pressure	< 45 psig (3 bar)
Water Temp Range	32 to 104 deg F (0 to 40 deg C)
Air Compressor System	Complete with dryer, receiver and automatic condensate valve

SPECIAL FEATURES

Redundant Module Racks	Optional configuration
Complete Automated CIP System	Standard
Operator Work Station	15" touch screen
HVAC	Optional

INSTRUMENTATION AND ELECTRICAL

Service	400 VAC, 3 phase, 50Hz, 80 FLA
Customer Communication	Analog or discrete signals
Remote Access/Diagnostics	Standard via eWon modem (Client requires SIM card)
Feed Turbidimeter	Standard
Filtrate Turbidimeter	Standard



Americas: +1 (866) 475.0115
EMEA: +49 (0) 6717 9610120
APAC: +61 3 9584 8100

@Pall_Water | company/pallwater | info@pallwater.com

pallwater.com

Pall Water has installations all over the globe. To speak to a Pall Water representative in your area, please go to www.pallwater.com.

Because of technological developments related to the products, systems, and/or services described herein, the data and procedures are subject to change without notice. Please consult your local representative to verify that this information remains valid.

© Copyright 2017, Pall Corporation. Pall, and Aria are trademarks of Pall Corporation. ® Indicates a trademark registered in the USA. ™ is a common law mark in the USA and is a service mark of Pall Corporation. Document ID: PWFAST60CDSa.